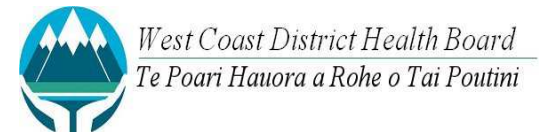




# SOUTH ISLAND HEALTH SERVICES PLAN



**South Island  
Shared Service Agency Limited**  
*Supporting the South Island District Health Boards  
E tautoko ana ngā Pōari Hauora ki Te Waipounamu*





# BACKGROUND

- The New Zealand Ministry of Health have recognised that the New Zealand health system will face significant challenges over the next 20 years, including:
  - population growth, redistribution and ageing
  - increasing risk and prevalence of long term conditions
  - reducing health inequalities
  - managing within an affordable funding path
  - effective utilisation of the available workforce
  - effective application of technological advances; and
  - rising consumer expectations
- Development of Long Term Systems Framework (LTSF)
  - NB – Name change coming!



# LONG TERM SYSTEMS FRAMEWORK

## ○ Goals

- Strengthening clinical sustainability
- Strengthening financial sustainability
- Improving system performance

## Through

- Sustainable services assessment & action
- Long term regional & national service planning
- Service planning tool development & promotion
- Health network developments
- Decision making streamlining
- Health futures initiative

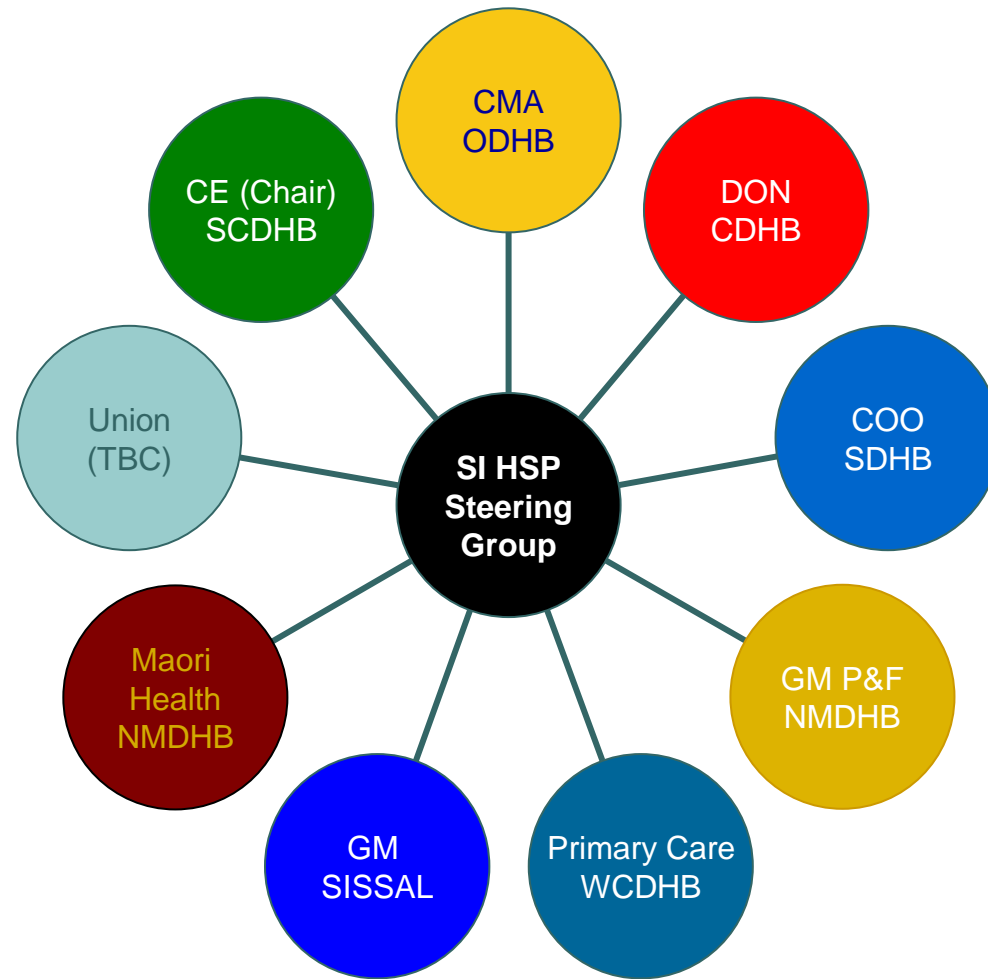


# SOUTH ISLAND DHB APPROACH

- Establishment of SI Health Services Planning (SIHSP) Steering Group
  - first meeting 24 Oct 2008
  - Terms of Reference & Principles approved– CE Meeting 5 Dec
- Purpose
  - To develop a South Island Health Service Plan that provides the principles and framework to support sustainable health and disability services for the population in the South Island
- Aims of SIHSP:
  - Reduce inequalities in access to services
  - Engagement of key stakeholders to ensure understanding & acceptability
  - Enhance the quality of clinical services
  - Enhance the sustainability of all clinical services
  - SI Health Services Planner – commenced in role 24 Nov 2008



# STEERING GROUP





# PLANNING PRINCIPLES

## ○ Equity of Access

- Planning will be based on the health needs of our constituent communities
- Historical demand and service provision will not determine future needs.
- Planning for health services relates to recognising and planning for changing demand and providing an equitable level of service for the population catchments with a continuing focus on reducing inequalities in health status

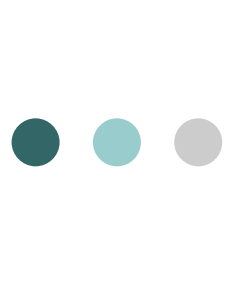
## ○ Māori health service needs

- We recognise our commitment to partnership with Maori.
- We recognise that Māori in our communities do not have equal access to health care or equal health outcomes.
- We aim to reduce health disparities by planning for services to address these.



# PLANNING PRINCIPLES

- Clinical engagement
  - Clinician input, through active clinical leadership, into the planning and decision making process is recognised as a critical component of the success of the SIHSP
- Patient centred consumer involvement
  - Health care services will be co-designed with service users including the patient.
  - This will be a collaborative process allowing a sharing of perspectives and experiences.
- Community engagement
  - The Community will be informed and involved so that they have an awareness of the SIHSP, the drivers of sustainable health services that may result in changes to health service configuration and can accept the outcomes as being in the long term best interest of the population



# PLANNING PRINCIPLES

## ○ Quality & safety

- The health consumer is the primary focus of any model of health care quality management
- Health treatment and care is based on the best available evidence with appropriate monitoring and evaluation.
- All health care providers have access to systems that enables outcomes of care to be assessed.
- Quality of care systems that focus on: safety, access, effectiveness, efficiency, acceptability, appropriateness, and consumer participation.

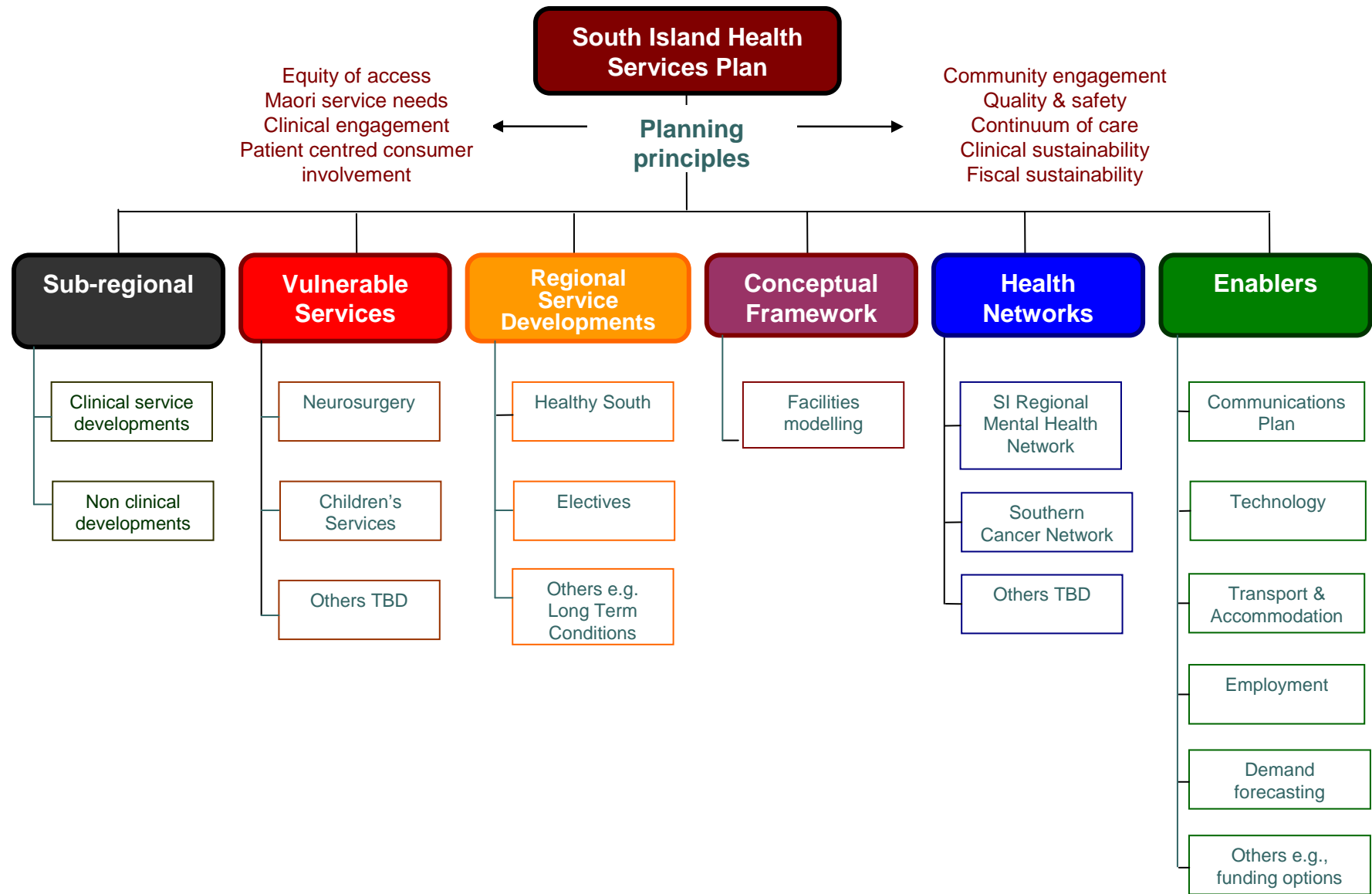
## ○ Continuum of care

- SIHSP will consider the full continuum of care
- Continuum of care refers to services and integrating mechanisms that guide & track patients/clients over time through a comprehensive array of services spanning public health through to tertiary & including supports required to enable service delivery



# PLANNING PRINCIPLES

- Clinical sustainability
  - The identification of future need and supply of clinical skills.
  - Design of service delivery models that allow appropriate access, meet credentialing requirements, support evidence based practice, and are consistently delivered to a high standard of quality & safety.
  - Clinical education and ongoing training for all health care providers must be considered to ensure quality service delivery.
- Fiscal sustainability
  - Acknowledgement that efficient and effective use of resources will be required across the SI.
  - Resources include workforce, facilities and infrastructure (including: information systems, clinical equipment, and transport) to deliver the models of care within the allocated funding system.





# WORKSTREAMS

- Sub-regional developments
  - The sub-regional work already underway will continue and it is anticipated that there will be useful learning's from this work for the HSP workstreams
  - Clinical e.g.
    - Southern Blood & Cancer
    - West Coast Sustainability Project
  - Non-clinical e.g.
    - Southern Alliance
- Vulnerable Services
  - A stocktake of services that could be at risk due to workforce, financial or other criteria has been undertaken. The first two services selected for South Island service planning approach are:
    - Neurosurgery
    - Children's Services



# WORKSTREAMS

- Regional Service Developments
  - Healthy South
    - a SI DHB & MoH collaboration to develop a framework for population health services
  - Electives Initiative
    - Elective surgery initiative to improve equity of access across the SI
  - Long Term Conditions (tbc)
- Conceptual Framework for Facilities
  - Demand modelling
    - hospital beds, theatres, workforce for future needs
  - Key principles for hospital facilities



# WORKSTREAMS

## ○ Clinical / Health Networks

- Clinical Networks are a workstream within the MoH LTSF & are likely to be one of the key future directions for service planning.
  - SI Regional Mental Health Network
  - Southern Cancer Network
  - Others to be determined

## ○ Enablers

- Communications
- Technology
- Employment
- Transport & Accommodation